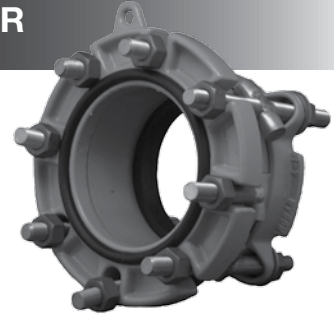




7404 / 7406 / 7504 / 7506

CAST DUCTILE IRON FLANGED COUPLING ADAPTER



APPLICATIONS:

ROBAR 7404 / 7406 / 7506 Flanged Coupling Adapters are used to flexibly adapt plain end pipe to flanged end.

MATERIAL SPECIFICATIONS:

Flanged Body: Cast Ductile Iron, Class "D", C-207, with ANSI 150 lbs. drilling.
 End Ring: Cast Ductile Iron.
 Gaskets:
 Flange: NBR (Buna N) Rubber.
 Coupling: SBR (Buna S) Rubber.**
 Fasteners: **7404 / 7504** - NC Cast Ductile Iron, or Low Alloy Steel.
7406 / 7506 - Stainless Steel fasteners, fully passivated*.
 Nuts coated with anti-galling compound.
 Torque is 70-80 ft. lbs.
 Coatings: **7404 / 7406** - Two coats of Enamel.
7504 / 7506 - Epoxy coated Body and End Ring.

HOW TO ORDER:

Determine the product number (7404, etc.), nominal pipe OD, the actual OD (see table below) and then use the appropriate ordering code as shown in the following example.

For a standard FCA required for 6" C900 PVC pipe (6.90" OD), the ordering code is:

7404 - 6" - 6.90" i.e. **7404 - 6 - 6.90**
 product nom. OD actual OD or **7404 - 6 - A1**
 number size

NOMINAL PIPE SIZE	WORKING RANGE			END CODE	NUMBER OF FASTENERS	APPROXIMATE SHIPPING WEIGHT	
	LOW	OD	HIGH			LBS.	KG.
4	3.45	3.50	3.60	4T	4 - 5/8 X 7-1/4 Cross Bolt 4 - 5/8 x 4-1/8 T-Bolt 12 - 5/8" Nuts	19	8.6
	3.75		4.05	F3A			
	4.05		4.35	F3B			
	4.40	4.50	4.60	D3			
	4.74	4.80	5.10	A1			
6	5.10		5.30	E5	4 - 3/4 x 8 Cross Bolt 4 - 3/4 x 4-1/4 T-Bolt 12 - 3/4" Nuts	30	13.6
	5.85		6.15	F3A			
	6.15		6.45	F3B			
	6.50	6.63	6.70	D3			
	6.86	6.90	7.10	A1			
8	7.15		7.35	E5	4 - 3/4 x 8 Cross Bolt 4 - 3/4 x 4-1/4 T-Bolt 12 - 3/4" Nuts	38	17.2
	7.90		8.25	F3A			
	8.25		8.55	F3B			
	8.55	8.63	8.75	D3			
	8.99	9.05	9.30	A1			
10	9.30		9.50	E5	6 - 7/8 x 9-3/8 Cross Bolt 6 - 7/8 x 5-1/8 T-Bolt 18 - 7/8" Nuts	56	25.4
	10.60	10.75	10.90	10T			
	11.10	11.10	11.40	B2			
	11.55		11.75	A1			
12	11.90		12.10	E5	6 - 7/8 x 9-3/8 Cross Bolt 6 - 7/8 x 5-1/8 T-Bolt 18 - 7/8" Nuts	72	32.6
	12.60	12.75	12.90	12T			
	13.20	13.20	13.50	B2			
	13.80		14.10	A1			
	14.10		14.35	E5			

All dimensions are in inches.

Note: * Refers to chemically treating Stainless Steel after welding ("Pickled/Passivated") to return it to its original appearance.

** Other compounds available. Contact ROBAR for price and delivery.

ROBAR INDUSTRIES LTD.

Surrey, British Columbia
 Phone: 1-800-663-6553

Saint-Bruno, Quebec
 Phone: 1-800-315-9525

Website: www.robarindustries.com / E-mail: waterworks@robarindustries.com