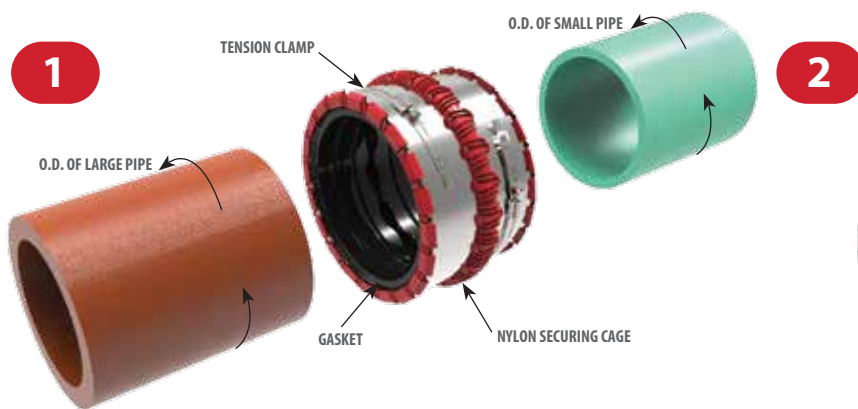
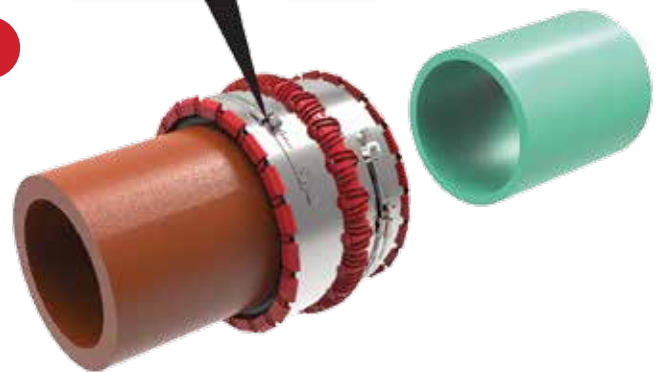
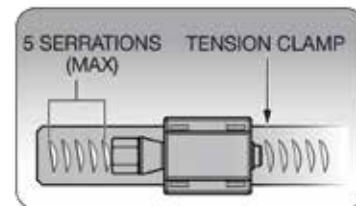


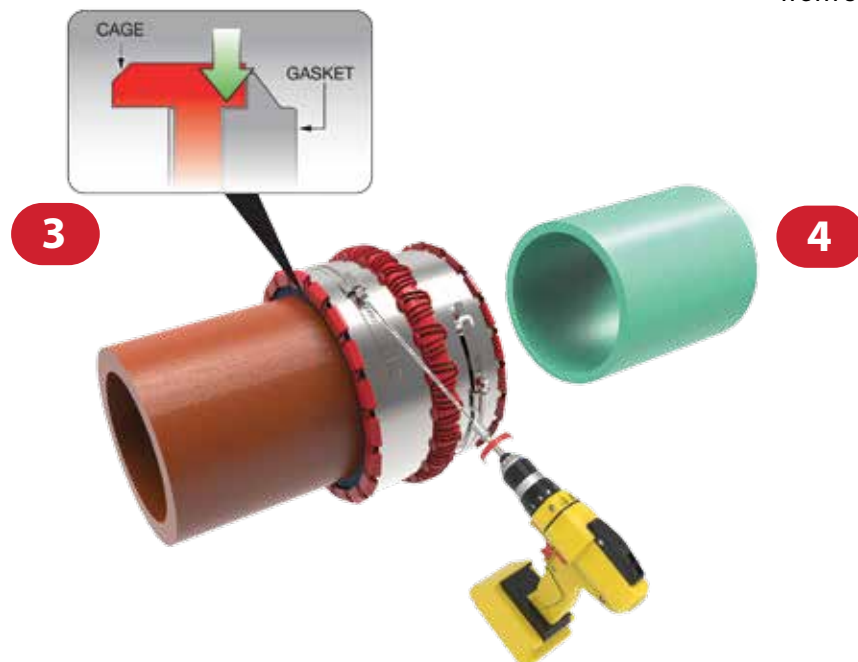
- NOTE:**
- ▶ Coupling should not be disassembled
 - ▶ Do not use an impact gun
 - ▶ Tension clamp is lubricated to prevent galling during installation with a cordless drill
 - ▶ For non-pressure, gravity flow sewer applications only



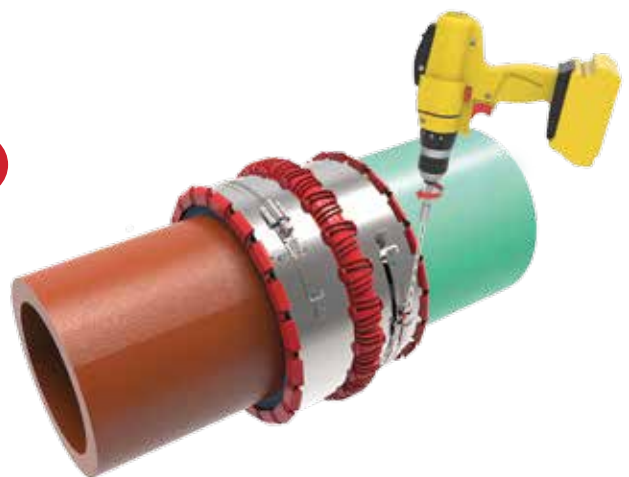
Measure outside diameters of the two pipes to be joined, ensuring diameters fall within pipe size chart (found on back side of document).



Install MAXADAPTOR™ Coupling over the large pipe end. If required, lubricate large pipe end with a soapy water solution and loosen tension clamps to no more than five (5) serrations from strap end (see insert).



Ensure gasket is centered and properly engaged inside nylon securing cage before tightening tension clamp. Tighten to 80 in/lbs. of torque.



Insert the smaller pipe into MAXADAPTOR™ Coupling and take up all slack in coupling with a cordless drill or socket wrench. Complete the installation by tightening the tension clamp to 80 in/lbs. of torque.



ONE&DONE

PIPE MATERIAL	4"	5"	6"	8"	10"	12"
Clay						
Mission Clay	5.370	6.650	7.680	9.900	12.430	14.460
Building Products Clay	5.200		7.750	9.800	12.400	14.400
Eastern Standard Clay	5.230	6.310	7.440	9.840	11.990	14.360
Gladding/McBean Clay	5.360		7.820	9.990	12.470	14.520
Pacific Clay	5.360		7.930	9.930	12.880	15.300
Metal						
No Hub Cast Iron	4.380	5.300	6.300	8.380	10.560	12.500
Service Weight Cast Iron	4.300	5.300	6.300	8.380	10.500	12.500
Extra Heavy Cast Iron	4.500	5.500	6.500	8.620	10.750	12.750
Ductile Iron	4.800		6.900	9.050	11.100	13.200
Steel	4.500	5.560	6.620	8.620	10.750	12.750
Copper	4.125	5.125	6.125	8.125	10.125	
Stainless Steel	4.000	5.000	6.000	8.000	10.000	
Duriron®	4.750		6.690			
Plastic						
Schedule 40 Plastic	4.500	5.560	6.620	8.620	10.750	12.750
Thinwall Plastic PVC (ASTM 3033) - SDR 41	4.210		6.270	8.160	10.200	12.240
Thinwall Plastic PVC (ASTM 3034) - SDR 35	4.210		6.270	8.400	10.500	12.500
Thinwall Plastic ABS (ASTM 2751)	4.210	5.300	6.270	8.400	10.500	12.500
Miscellaneous						
Armco Truss				9.400	11.800	14.100
Bituminous Fiber	Min.	Min.	Min.	Min.	Min.	Min.
Orangeberg	4.640	5.820	6.920	9.140	11.240	13.440
Asbestos Cement Class 1500 - Transite	4.810	5.900	6.920	9.020	11.120	13.220
Concrete	Min. 5.500	Min. 6.500	Min. 7.500	Min. 10.000	Min. 12.450	Min. 14.500