



1519

CAST DUCTILE IRON COUPLING CATHODICALLY FITTED



APPLICATIONS:

ROBAR **1519** non-restrained Couplings are specially designed (cathodically fitted) to allow for electrical continuity throughout the entire fitting. Sacrificial anodes (not supplied) are recommended to protect the coupling assembly as long as "continuity" is maintained between the coupling components. To ensure "isolation" between metal pipes, the use of ROBAR **1180** Rubber Isolation Boot is recommended. (See "ROBAR **1180** Rubber Isolation Boot", page 1.10.1). Isolation Boots are available in Straight, Transition or Reducing styles.

MATERIAL SPECIFICATIONS:

Center Sleeve: Cast Ductile Iron.
 End Rings: Cast Ductile Iron.
 Gaskets: SBR (Buna S) Rubber.
 Other compounds available.
 Fasteners: 5/8" NC HSLA Steel, Epoxy coated bolts.
 1/4" Zinc plated cap screws.
 Torque is 70-80 ft. lbs.
 Coating: Corrosion Protective Epoxy coating.

HOW TO ORDER:

Determine the product number (**1519**) and the pipe OD or end plate combination for each end of the coupling (see page 1.1.1, 1.1.2), and then use the appropriate ordering code as shown in the following example.

To couple a 6" Steel pipe (6.63" OD) to a 6" DI pipe (6.90" OD), using MS Bolts and set screws the ordering code is:

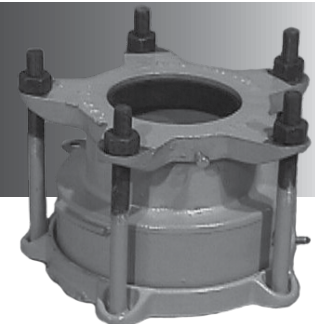
1519 - 6.63" x 6.90" i.e. **1519 - 6.63 x 6.90**
 product OD (Actual) OD (Actual) or **1519 - 6 D3 x A1**
 number

Note: - Coupling nuts are not Epoxy coated. We ensure continuity by removing the Epoxy coating from the underside of the bolt head and bolt head bearing surface of the end ring.



1519R

CAST DUCTILE IRON REDUCING COUPLING CATHODICALLY FITTED



APPLICATIONS:

ROBAR **1519R** Reducing Couplings are used to make a non-restrained connection between two pipes of different nominal sizes. They are specially designed (cathodically fitted) to allow for electrical continuity throughout the entire fitting. Sacrificial anodes (not supplied) are recommended to protect the coupling assembly as long as "continuity" is maintained between the coupling components. To ensure "isolation" between metal pipes, the use of ROBAR **1180** Rubber Isolation Boot is recommended. (See "ROBAR **1180** Rubber Isolation Boot" product information sheet, page 1.10.1). Isolation Boots are available in Straight, Transition or Reducing styles.

MATERIAL SPECIFICATIONS:

Center Sleeve: Cast Ductile Iron.
 End Rings: Cast Ductile Iron.
 Gaskets: SBR (Buna S) Rubber.
 Other compounds available.
 Fasteners: 5/8" NC HSLA Steel, Epoxy coated bolts.
 1/4" Zinc plated cap screws.
 Torque is 70-80 ft. lbs.
 Coating: Corrosion Protective Epoxy coating.

HOW TO ORDER:

Determine the product number (**1519R**) and the pipe OD or end plate combination for each end of the coupling (see page 1.2.1, 1.2.2), and then use the appropriate ordering code as shown in the following example.

To couple a 8" Steel pipe (8.63" OD) to a 6" DI pipe (6.90" OD), using MS Bolts and set screws the ordering code is:

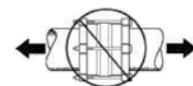
1519R - 8.63" x 6.90" i.e. **1519R - 8.63 x 6.90**
 product OD (Actual) OD (Actual) or **1519R - 8D3 x 6A1**
 number

Note: - Coupling nuts are not Epoxy coated. We ensure continuity by removing the Epoxy coating from the underside of the bolt head and bolt head bearing surface of the end ring.



These products are tested and certified by WQA to NSF/ANSI standard 61

CAUTION



Couplings do not prevent pipe pullout. Suitable restraint should be used when required.

ROBAR INDUSTRIES LTD.

Surrey, British Columbia
 Phone: 1-800-663-6553

Saint-Bruno, Quebec
 Phone: 1-800-315-9525

Website: www.robarindustries.com / E-mail: waterworks@robarindustries.com