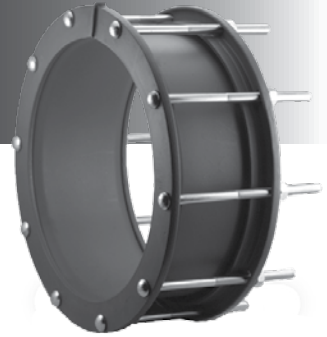




1808 / 1906

FABRICATED STEEL COUPLING



APPLICATIONS:

Fabricated **1808 / 1906** Non-Restraining Couplings are used to flexibly couple larger diameter pipe. The **1906** is Epoxy coated with stainless steel fasteners. 4" through 120" available. Can be used to couple concrete pressure pipe together.

MATERIAL SPECIFICATIONS:

Center Sleeve: Carbon Steel.
 End Rings: Carbon Steel.
 Gaskets: SBR (Buna S) Rubber.
 Other compounds available.
 Fasteners: **1808/1908** - 5/8" NC HSLA Steel.
1806/1906 - 5/8" Stainless Steel.
 Nuts coated with anti-galling compound.
 Torque is 70-80 ft. lbs.
 Coating: **1806/1808** - Shop Coat.
1906/1908 - Epoxy coated.

HOW TO ORDER:

Determine the product number (**1808**), **actual pipe OD**, Center Sleeve thickness, Center Sleeve length and then use the appropriate ordering code (see chart below), as shown in the following example.

To couple an 18" Steel pipe (18.00" OD) with a 7" long by 1/4" thick Center Sleeve with shop coat and MS bolts, the ordering code is:

1808 - 18.00" - 1/4" x 7"
 product OD (Actual) thickness sleeve
 number length

i.e. **1808 - 18.00 - 1/4 x 7**

Couplings can be manufactured for any diameter. Examples below are Ductile and Steel ODs only. Couplings listed are for common sizes. Please contact ROBAR for sizes not listed below.

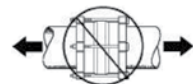
NOMINAL PIPE SIZE	OD PIPE	OVERALL OUTSIDE DIAMETER	CENTER SLEEVE T x L	FASTENERS NO. x DIA. x LENGTH	APPROXIMATE SHIPPING WEIGHT	
					LBS.	KG.
4	4.50	8.50	1/4 x 5	5/8 x 8	22	10
	4.80	9.17	1/4 x 5	5/8 x 8	22	10
6	6.63	11.00	1/4 x 7	5/8 x 11	26	12
	6.90	11.27	1/4 x 7	5/8 x 11	26	12
8	8.63	12.313	1/4 x 7	5/8 x 11	33	15
	9.05	12.563	1/4 x 7	5/8 x 11	33	15
10	10.75	14.438	1/4 x 7	5/8 x 11	40	18
	11.10	14.625	1/4 x 7	5/8 x 11	40	18
12	12.75	17.125	1/4 x 7	5/8 x 11	60	27
	13.20	17.563	1/4 x 7	5/8 x 11	66	30
14	14.00	18.375	1/4 x 7	5/8 x 11	80	36
	15.30	19.688	3/8 x 7	5/8 x 11	90	41
16	16.00	20.125	1/4 x 7	10 - 5/8 x 11	74	33.6
	17.40	21.75	3/8 x 7	10 - 5/8 x 11	87	39.6
18	18.00	22.125	1/4 x 7	10 - 5/8 x 11	81	36.8
	19.50	23.875	3/8 x 7	12 - 5/8 x 11	96	43.6
20	20.00	24.125	1/4 x 7	12 - 5/8 x 11	90	40.9
	21.60	26.00	3/8 x 7	12 - 5/8 x 11	107	48.6
24	24.00	28.125	1/4 x 7	14 - 5/8 x 11	107	48.6
	25.80	30.188	3/8 x 7	14 - 5/8 x 11	127	57.7
30	30.00	34.125	1/4 x 7	16 - 5/8 x 11	130	58.9
	32.00	36.375	3/8 x 7	16 - 5/8 x 11	156	71.2
36	36.00	40.125	1/4 x 7	18 - 5/8 x 11	155	70.30
	38.30	42.688	3/8 x 7	18 - 5/8 x 11	185	83.9

Larger sizes available

All dimensions are in inches.

- Note: - Any barrel length requirement can be accommodated. Please contact ROBAR to specify longer barrels.
 - Couplings are fabricated to exact ODs supplied at time of order.
 - Contact ROBAR for working pressures.

CAUTION



Couplings do not prevent pipe pullout. Suitable restraint should be used when required.

ROBAR INDUSTRIES LTD.

Surrey, British Columbia
 Phone: 1-800-663-6553

Saint-Bruno, Quebec
 Phone: 1-800-315-9525

Website: www.robarindustries.com / E-mail: waterworks@robarindustries.com