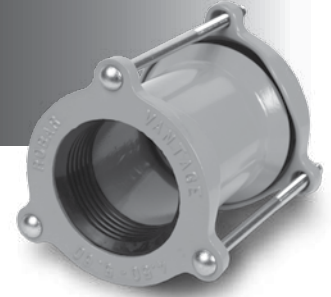




# VANTAGE COUPLING



## APPLICATIONS:

ROBAR **Vantage** couplings can be used to couple dissimilar ODs in the same nominal size group. The **Vantage** coupling comes with a stab-fit design, allowing for use on Ductile, Steel, PVC, HDPE, and AC pipe.

## MATERIAL SPECIFICATIONS:

- Center Sleeve: Carbon Steel.
- End Rings: Cast Ductile Iron.
- Gaskets\*: SBR (Buna S) Rubber. (other gasket material available upon request)
- Fasteners: **1498/1598** - 5/8" NC HSLA Steel.  
**1496/1596** - 5/8" T304 Stainless Steel.  
Nuts coated with anti-galling compound.  
Torque is 70 ft. lbs.
- Coating: **1498 /1496** - 2 coats of Enamel.  
**1598 /1596** - Corrosion Protective Epoxy coating.
- Options: **1696** - T-304 Stainless Steel center sleeve, end rings and fasteners with SBR gaskets.

## HOW TO ORDER:

Determine the product number (**1596, etc.**), and order the nominal size you require and then use the appropriate ordering code as shown in the example.

To couple 6" steel pipe (6.63"OD) to a 6" ductile pipe (6.90"), using SS bolts and epoxy coating, the ordering code is:

**1596** x 6" i.e. **1596 x 6**  
product x coupling  
number range

| NOMINAL SIZE | WORKING RANGE | BARREL LENGTH | NO. OF BOLTS | WEIGHT LBS. |
|--------------|---------------|---------------|--------------|-------------|
| 4            | 4.50 - 5.60   | 8             | 3            | 24          |
| 6            | 6.63 - 7.60   | 8             | 3            | 32          |
| 8            | 8.63 - 9.80   | 8             | 3            | 39          |
| 10           | 10.75 - 12.26 | 12            | 4            | 74          |
| 12           | 12.75 - 14.40 | 12            | 5            | 106         |

All dimensions are in inches.

**4 -10" Couplings rated for 175 PSI working pressure.**

**12" Couplings rated for 150 PSI working pressure.**

## CAUTION



Couplings do not prevent pipe pullout. Suitable restraint should be used when required.

Note: - The use of a pipe insert is required when installing coupling on HDPE.  
- Angular deflection up to 7° degrees.

## ROBAR INDUSTRIES LTD.

Surrey, British Columbia  
Phone: 1-800-663-6553

Saint-Bruno, Quebec  
Phone: 1-800-315-9525

Website: [www.robarindustries.com](http://www.robarindustries.com) / E-mail: [waterworks@robarindustries.com](mailto:waterworks@robarindustries.com)