



9010 DRILLING MACHINE

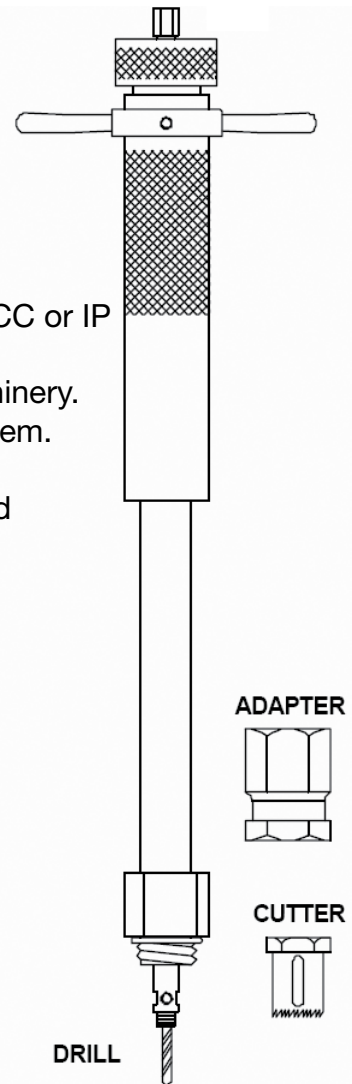
NEW MODEL - NO EXTENSION REQUIRED:

The **9010** Drill Master is the result of 30 years of revisions to the original Dan-Dee drilling machine. It is made of the finest non-corrosive materials, with each machine being individually inspected prior to shipment. Its light weight, versatility, and ease of operation have made it a favorite of installers within the Waterworks Industry.

FOR DRILLING DI, CI, A/C, STEEL AND PLASTIC MAINS.

TYPE **9010**:

- A compact tool that drills mains for 3/4", 1", 1-1/4", 1-1/2" and 2" CC or IP Taps. (See manufacturer's notes.)
- Completes the operation before you can set up older, heavier machinery.
- Removes the coupon from the pipe - No drillings in your water system.
- For tapping (Hot & Dry) DI, CI, A/C, Steel and Plastic mains.
- Basic machine includes: ratchet wrench, pilot drill, allen wrench and carrying case. (See page 9.1.2)
- Machine weight: 7 lbs. Shipping weight w/carrying case: 17 lbs.



Note: - The **9010** is not recommended for use on any fluid distribution system other than water.
- The use of mechanical assist tools such as drill motors or impact hammers is not recommended, as such use may bind the cutter and possibly break the stainless steel shaft.
- Avoid the drilling of pipes with pressures in excess of 175 PSI, as higher pressures may blow out seals.
- Observe all accepted safety precautions when operating machine.

ROBAR INDUSTRIES LTD.

Surrey, British Columbia
Phone: 1-800-663-6553

Saint-Bruno, Quebec
Phone: 1-800-315-9525

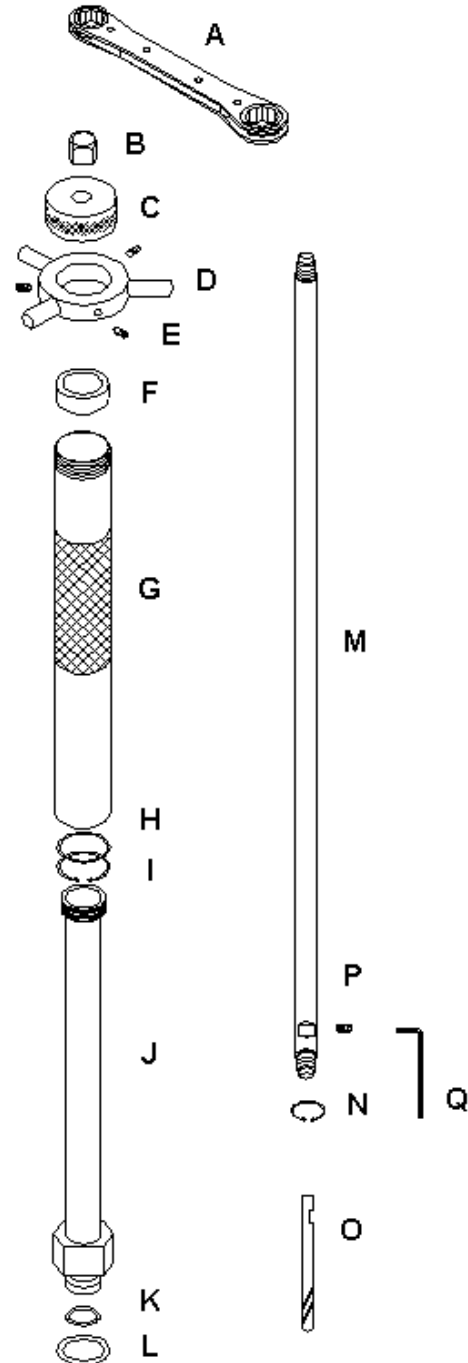
Website: www.robarindustries.com / E-mail: waterworks@robarindustries.com



APAC 9010

DRILLING MACHINE

PART NUMBER	DESCRIPTION
9010	Drilling Machine - Manual operation c/w Carrying Case
902-048	1 1/2" Adapter for corp. stops with compression outlets
902-049	2" Adapter for corp. stops with compression outlets
902-050	3/4" Adapter for corp. stops with compression outlets
902-051	3/4" IP Adapter
902-052	1" Adapter for corp. stops with compression outlets
902-053	1" IP Adapter
902-054	1 1/4" Adapter for corp. stops with compression outlets
902-055	1 1/4" IP Adapter
902-056	1 1/2" Copper Adapter *Not common
902-057	1 1/2" IP Adapter
902-058	2" Copper Adapter *Not common
902-059	2" IP Adapter
903-071	11/16" Hole Saw (for 3/4" high speed)
903-072	7/8" Hole Saw (for 1" high speed)
903-073	1 1/8" Hole Saw (for 1 1/4" high speed)
903-074	1 3/8" Hole Saw (for 1 1/2" high speed)
903-075	1 7/8" Hole Saw (for 2" high speed)
905-040	11/16" Hole Saw (for 3/4" Carbide tipped)
905-041	7/8" Hole Saw (for 1" Carbide tipped)
905-042	1 1/8" Hole Saw (for 1 1/4" Carbide tipped)
905-043	1 3/8" Hole Saw (for 1 1/2" Carbide tipped)
905-044	1 7/8" Hole Saw (for 2" Carbide tipped)
A	908-080 Ratchet Wrench
B	908-081 Shaft Drive Nut
C	908-082 Brass Bearing Cap
D	908-083 Feed Hand Wheel
E	908-084 Feed Wheel Set Screw
F	908-085 Thrust Bearing
G	908-086 Brass Feed Tube
H	908-087 Teflon Wiper
I	908-088 Metal Snap Ring
J	908-089 Brass Body
K	908-090 O-Ring Packing
L	908-091 Gasket (machine to adapter)
M	908-092 SS Shaft
N	908-093 Shaft Snap Ring
O	908-094 Pilot Drill
P	908-095 Set Screw
Q	908-096 Allen Wrench
	908-097 Shell Cutter Bushing



Note: - Shell Cutter Bushing is required for using 1-1/2" and 2" Hole Saw Cutters.

ROBAR INDUSTRIES LTD.

Surrey, British Columbia
Phone: 1-800-663-6553

Saint-Bruno, Quebec
Phone: 1-800-315-9525

Website: www.robarindustries.com / E-mail: waterworks@robarindustries.com