



# 2616 / 2626 / 2636

## FABRICATED STAINLESS STEEL SERVICE SADDLE - SERIES 2606

### APPLICATIONS:

ROBAR **2606** Service Saddles are used to take a service outlet off any transmission or distribution supply line. Especially recommended for Plastic pipe or where corrosion is a factor. Can be used on Ductile, Steel, HDPE, and AC pipe.

### MATERIAL SPECIFICATIONS:

Saddle Body: T304 Stainless Steel, fully passivated\*.  
Gasket: SBR (Buna S) Rubber.  
Robar "Boss Pad" Gasket.  
Other compounds available\*\*.  
Fasteners: 5/8" NC T304 Stainless Steel studs,  
rolled threads, fully passivated\*.  
Nuts coated with anti-galling compound.

### HOW TO ORDER:

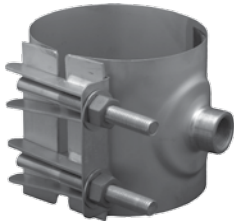
Determine the product number (**2616, etc.**), the actual OD, (see Table on pages 2.3.2, 2.3.3 and 2.3.4), outlet size, outlet thread, and bolt style, and then use the appropriate ordering code as shown in the following examples. If a double bolt (DB) saddle with a 3/4" cc tap is required on a 6" Ductile Iron pipe (6.90), the ordering code is:

**2616** - 7.00" x 3/4" - CC - DB  
product high limit of outlet outlet bolt style  
number range size thread

i.e. **2616 - 7.00 x 3/4 - CC - DB**

### OPTIONS:

- 2 1/2" and 3" IP outlets are available on nominal sizes 6" and larger on **2626** and **2636** saddles only.
- Saddle body can be made wider if required.



**2616** (1 Section)

- Double bolt closures (DB) on 2" through 12" nominal pipe sizes.



**2626** (2 Sections)

- Double (DB) bolt closures on 4" through 18" nominal pipe sizes.



**2636** (3 Sections)

- Double (DB) bolt closures on 16" through 30" nominal pipe sizes.

Note: \* Refers to chemically treating Stainless Steel after welding ("Pickled/Passivated") to return it to its original appearance.

\*\* Alternative gasket materials are available. Refer to the Gasket Selection Chart (see page 0.5.1) and contact ROBAR for pricing and delivery.

- Please contact ROBAR with your special requirements to determine availability, price and delivery.



These products are tested and certified by WQA to NSF/ANSI standard 61

### ROBAR INDUSTRIES LTD.

Surrey, British Columbia  
Phone: 1-800-663-6553

Saint-Bruno, Quebec  
Phone: 1-800-315-9525

Website: [www.robarindustries.com](http://www.robarindustries.com) / E-mail: [waterworks@robarindustries.com](mailto:waterworks@robarindustries.com)



# 2616

## FABRICATED STAINLESS STEEL SERVICE SADDLE - SERIES 2606

### 2616 SERVICE SADDLE CHART

NOMI- NAL PIPE SIZE	OUTLET SIZES AWWA (CC) OR IRON PIPE (IP)	BOLT STYLE  DOUBLE (DB)	SADDLE WIDTH	APPROXIMATE SHIPPING WEIGHT		WORKING RANGE							
				LBS.	KG.	PIPE							
						LOW	OD	HIGH*					
2	3/4 - 1 1/4**	DB	6.0	1.5	0.7	2.30	<b>2.38</b>	2.50					
						2.50		2.70					
2.5	3/4 - 1 1/2**	DB	6.0	1.8	0.8	2.70	<b>2.88</b>	2.90					
						2.90		3.15					
						3.15		3.40					
						3.40		3.50	3.80				
3	3/4 - 1	DB	6.0	2.0	0.9	3.65	<b>3.50</b>	3.90					
	1 1/4 - 2**		8.0	3.5	1.5	3.90		4.10					
						4.00		4.40					
4	3/4 - 1	DB	6.0	3.3	1.5	4.40	<b>4.50</b>	4.80					
						1 1/4 - 2		8.0	3.9	1.6	4.80	<b>4.80</b>	5.20
											5.20	5.60	
	5.60		6.00										
	6		3/4 - 1	DB	6.0	3.8	1.7	6.00	<b>6.63</b>	6.40			
								1 1/4 - 2		8.0	4.0	1.8	6.40
6.60		7.00											
6.80		7.20											
7.20		7.60											
8	3/4 - 1	DB	6.0	4.8	2.2	8.00	<b>8.63</b>	8.40					
						1 1/4 - 2		8.0	5.0	2.3	8.40	<b>8.63</b>	8.80
											8.60	9.05	
	8.90		<b>9.05</b>	9.30									
	9.00		9.40										
	10		3/4 - 1	DB	6.0	5.8		2.5	9.20	<b>10.75</b>	9.60		
									1 1/4 - 2		8.0	6.0	2.7
10.00		10.40											
10.40		<b>10.75</b>	10.80										
10.70		<b>11.10</b>	11.10										
10.90		11.30											
11.10		11.50											
11.60	12.00												
12	3/4 - 1	DB	6.0	6.8	3.0	12.00	<b>13.20</b>	12.40					
						1 1/4 - 2		8.0	7.0	3.2	12.40	<b>12.75</b>	12.80
											12.75	<b>13.20</b>	13.20
	13.00		13.40										
	13.10		13.50										
	13.60		14.00										

Note: \* The high limit of the range is used in the ordering code.

\*\* 1-1/4" IP, 1-1/2" IP and 2" IP outlets only.

- This product can be manufactured to your specifications. For ranges and configurations other than those listed, contact ROBAR.



All dimensions are in inches.

This product is tested and certified by WQA to NSF/ANSI standard 61

### ROBAR INDUSTRIES LTD.

Surrey, British Columbia  
Phone: 1-800-663-6553

Saint-Bruno, Quebec  
Phone: 1-800-315-9525

Website: [www.robarindustries.com](http://www.robarindustries.com) / E-mail: [waterworks@robarindustries.com](mailto:waterworks@robarindustries.com)



# 2626

## FABRICATED STAINLESS STEEL SERVICE SADDLE - SERIES 2606

2626 SERVICE SADDLE CHART							
NOMI- NAL PIPE SIZE	OUTLET SIZES** AWWA (CC) OR IRON PIPE (IP)	SADDLE WIDTH	APPROXIMATE SHIPPING WEIGHT		WORKING RANGE		
			LBS.	KG	PIPE		
					LOW	OD	HIGH*
4	3/4 - 1	6.0	3.5	1.6	4.45	<b>4.50</b>	5.25
					4.74	<b>4.80</b>	5.54
	1 1/4 - 2	8.0	4.0	1.8	5.35		6.15
					5.90		6.70
6	3/4 - 1	6.0	4.0	1.8	6.40	<b>6.63</b>	7.20
					6.85	<b>6.90</b>	7.65
	1 1/4 - 3	8.0	4.8	2.2	7.05		7.85
8	3/4 - 1	6.0	5.0	2.3	7.95	<b>8.63</b>	8.75
					8.40	<b>9.05</b>	9.20
	1 1/4 - 3	8.0	5.5	2.5	9.00		9.80
					9.30		10.10
10	3/4 - 1	6.0	6.5	3.0	10.00	<b>10.75</b>	10.80
					10.70	<b>11.10</b>	11.50
	1 1/4 - 3	8.0	7.0	3.2	11.05		11.85
					11.40		12.20
12	3/4 - 1	6.0	8.0	3.6	12.00	<b>12.75</b>	12.80
					12.70	<b>13.20</b>	13.50
	1 1/4 - 3	8.0	8.5	3.9	13.10		13.90
					13.40		14.20
					13.70	<b>14.00</b>	14.50
14	3/4 - 1	6.0	8.5	3.9	14.00		14.80
					14.95	<b>15.30</b>	15.75
	1 1/4 - 3	8.0	9.0	4.1	15.75		16.55
16	3/4 - 1	6.0	9.8	4.4	15.60	<b>16.00</b>	16.40
					16.40		17.20
	1 1/4 - 3	8.0	10.3	4.7	17.20	<b>17.40</b>	18.00
18	3/4 - 1	6.0	10.8	4.9	17.60	<b>18.00</b>	18.40
					18.00		18.80
	1 1/4 - 3	8.0	11.2	5.1	18.40		19.20
					18.80		19.60
					19.20	<b>19.50</b>	20.00

All dimensions are in inches.

Note: \* The high limit of the range is used in the ordering code.  
 \*\* 2 1/2" and 3" IP outlets available on nominal sizes 6" and above.  
 - This product can be manufactured to your specifications. For ranges and configurations other than those listed, contact ROBAR.



This product is tested and certified by WQA to NSF/ANSI standard 61

### ROBAR INDUSTRIES LTD.

Surrey, British Columbia  
 Phone: 1-800-663-6553

Saint-Bruno, Quebec  
 Phone: 1-800-315-9525

Website: [www.robarindustries.com](http://www.robarindustries.com) / E-mail: [waterworks@robarindustries.com](mailto:waterworks@robarindustries.com)



# 2636

## FABRICATED STAINLESS STEEL SERVICE SADDLE - SERIES 2606

### 2636 SERVICE SADDLE CHART

NOMI- NAL PIPE SIZE	OUTLET SIZES AWWA (CC) OR IRON PIPE (IP)	SADDLE WIDTH	APPROXIMATE SHIPPING WEIGHT DOUBLE BOLT		WORKING RANGE		
			LBS.	KG.	PIPE		
					LOW	OD	HIGH*
16	3/4 - 1	6	10.8	4.9	15.92	16.00	17.12
	1 1/4 - 3	8	11.3	5.1	16.25		17.45
18	3/4 - 1	6	11.8	5.4	17.10	17.40	18.30
	1 1/4 - 3	8	12.2	5.5	17.50	18.00	18.70
20	3/4 - 1	6	12.8	5.8	19.20	19.50	20.40
	1 1/4 - 3	8	13.2	6.0	21.40	21.60	22.60
24	3/4 - 1	6	12.8	5.8	22.80		24.00
	1 1/4 - 3	8	13.2	6.0	23.45	24.00	24.65
26-30	3/4 - 1	6	13.2	6.0	24.45		25.65
	1 1/4 - 3	8	14.0	6.35	25.50	25.80	26.70
					28.25		29.45
					29.40	30.00	30.60

For larger nominal pipe sizes see 6626 outlet sleeve. (page 6.3.1)

All dimensions are in inches.

**Note: 26-30": Maximum 50 PSI WP**

Note: \* The high limit of the range is used in the ordering code.  
 - This product can be manufactured to your specifications. For ranges and configurations other than those listed, contact ROBAR.



This product is tested and certified by WQA to NSF/ANSI standard 61

### ROBAR INDUSTRIES LTD.

Surrey, British Columbia  
 Phone: 1-800-663-6553

Saint-Bruno, Quebec  
 Phone: 1-800-315-9525

Website: [www.robarindustries.com](http://www.robarindustries.com) / E-mail: [waterworks@robarindustries.com](mailto:waterworks@robarindustries.com)