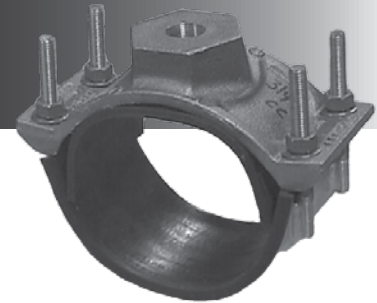




# 2786

## CAST BRONZE ISOLATING SADDLE



### APPLICATIONS:

ROBAR **2786** Isolating Saddles are used to electrically isolate an outlet or service line from a main distribution line. Primarily used in cathodically protected systems or to separate dissimilar metals. Waterworks Bronze and passivated T304 Stainless Steel are “noble” materials which are closely related to each other near the top of the Galvanic Scale of corrosion resistance. Unlike pairs of widely dissimilar metals, they will both exhibit long life in most ‘hot’ soil environments.

### MATERIAL SPECIFICATIONS:

Saddle Body: Cast Bronze.  
 Gaskets: SBR (Buna S) Rubber. Body and Strap.  
 Strap & Armor: T304 Stainless Steel, fully passivated\*.  
 Fasteners: 1/2" NC T304 Stainless Steel.  
 Rolled threads.  
 Nuts coated with anti-galling compound.  
 Torque is 45 ft. lbs.

### HOW TO ORDER:

Determine the product number (**2786**), the actual OD, outlet size and outlet thread, and then use the appropriate ordering code as shown in the following example.

If an Isolating Saddle with a 3/4" CC outlet is required for 6" Standard Ductile pipe (6.90" OD) the ordering code is:

**2786** - 6.90" x 3/4" - CC  
 product OD (Actual) outlet outlet  
 number size thread

i.e. **2786 - 6.90 x 3/4 - CC**

### ELECTRICAL SPECIFICATIONS:

Conditions: Laboratory, torque level 45 ft. lbs.  
 Resistance: 800 Mega ohms @ 10,000 volts DC.  
 Breakdown Voltage: Minimum 12,000 volts DC.

### 2786 ISOLATING SADDLE CHART

NOMINAL PIPE SIZE	WORKING RANGE		APPROXIMATE SHIPPING WEIGHT	
	LOW	HIGH	LBS.	KG.
4	4.50	5.30	6.7	2.3
6	6.60	7.40	7.2	3.2
8	8.60	9.40	7.5	3.4
10	10.70	11.50	8.0	3.6
12	12.70	13.50	9.2	4.2
14	13.80	15.70	10.2	4.6
	15.20	16.00	10.5	4.8
16	17.20	18.00	11.0	5.0
18	19.00	20.00	11.5	5.2
20	20.80	21.90	12.0	5.4

All dimensions are in inches.

Note: \* Refers to chemically treating Stainless Steel after welding (“Pickled/Passivated”) to return it to its original appearance.  
 - The **2786** is designed to be installed with a maximum torque of 45 ft. lbs. This enables the saddle to perform to its maximum electrical isolating capability.

### ROBAR INDUSTRIES LTD.

Surrey, British Columbia  
 Phone: 1-800-663-6553

Saint-Bruno, Quebec  
 Phone: 1-800-315-9525

Website: [www.robarindustries.com](http://www.robarindustries.com) / E-mail: [waterworks@robarindustries.com](mailto:waterworks@robarindustries.com)