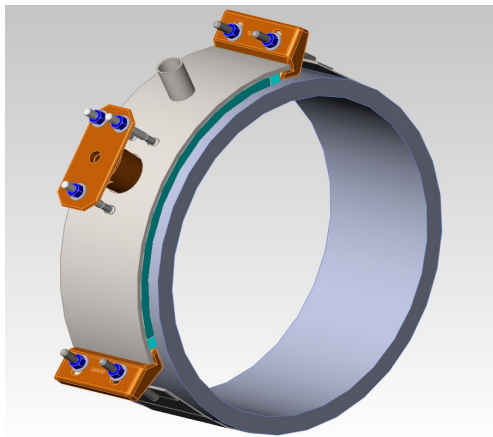




# 2996 Concrete Pressure Pipe Saddle

## PRICE INFORMATION



**Sizes Available:** 16" - 36" Nominal Pipe  
Outlets from 3/4" - 2" in AWWA taper (CC) or Female Iron Pipe (IP)  
Fits Concrete Cylinder Pipe

**Use:**  
ROBAR 2996 Concrete Cylinder Service Saddle are used to take a service outlet off a transmission line or distribution line.

### Material Specification:

Top Plate: ASTM A36  
Outlet: Cast Ductile Iron  
Strap: T-304L Stainless Steel, fully passivated  
Fasteners: 5/8" NC T-304L Stainless Steel studs, rolled threads, nuts coated  
Coating: Corrosion Protective Epoxy per AWWA C213

Nominal Pipe Size	List Price
16"	\$ 648.15
18"	\$ 687.92
20"	\$ 727.66
24"	\$ 768.83
30"	\$ 796.59
36"	\$ 955.90

Larger sizes available upon request

### HOW TO ORDER:

Determine the product number (2996), outlet size and outlet thread, then provide the concrete OD and the Cylinder OD as shown in the example.

**2996 - 24" x 3/4" CC**

ie. - 2996 - 24" x 3/4CC conc OD=29.00", Cylinder OD=27.00"

Note: Outside diameter of the concrete and cylinder are required at time of order.

### ROBAR INDUSTRIES LTD.

**BC** Phone (604) 591-8811 / 1-800-663-6553  
Fax (604) 591-5288  
Email: waterworks@robarindustries.com

### LES PRODUITS INDUSTRIELS ROBAR INC.

**QUEBEC** Phone (450) 441-7525 / 1-800-315-9525  
Fax (450) 441-4894  
Web: www.Robarindustries.com