



# 6606 Series

## STAINLESS STEEL TAPPING SLEEVE

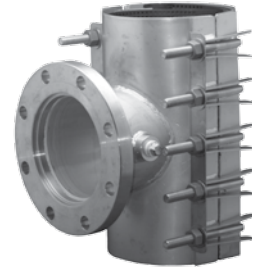
### APPLICATIONS:

The ROBAR **6606 Series Tapping Sleeves** are used for “WET” or “DRY” tapping. Available for pipe diameters from 4” to 24”. Outlet options: 4” to 12”. Larger nominal sizes and/or larger flange sizes available upon request. Not for use on Concrete Cylinder pipe.

## 6606 Lifter Bar

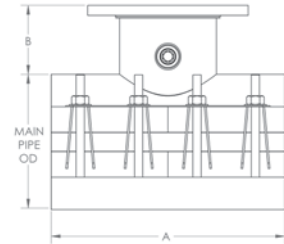
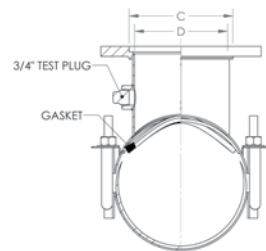
### MATERIAL SPECIFICATIONS:

Shell: T-304 Stainless Steel, fully passivated\*.  
 Fasteners: 5/8” NC T304 Stainless Steel. Nuts coated with anti-galling compound.  
 Torque is 70-80 ft. lbs.  
 Gaskets: Ringseal: NBR (Buna N) Rubber. Liner: SBR (Buna S) Rubber. Full wrap around.  
 Test Plug: 3/4” NPT Stainless Steel.  
 Flange: T-304 Stainless Steel\*, as per AWWA C-207 Class D. (Carbon Steel, Epoxy coated Flange available)  
 Outlet Pipe: T-304 Stainless Steel, fully passivated\*.



TAPPING SLEEVE DATA					
NOMINAL OUTLET SIZE	A	B	C (DIA.)	D (DIA.)	BOLT SIZE
3	12	4	4 1/32	3 1/2	5/8
4	12	4	5 1/32	4 1/2	5/8
6	16	4 1/2	7 1/32	6 1/2	5/8
8	20	5	9 1/32	8 1/2	5/8
10	20	5 1/2	11 1/32	10 7/16	5/8
12	24	5 3/4	13 1/32	12 7/16	5/8

All dimensions are in inches.



### HOW TO ORDER:

Determine the product number (**6606**), nominal main size, nominal outlet size, high limit number (see table above), and then order using the appropriate ordering code as shown in the following example. If a Stainless Steel Tapping Sleeve, with a 6” nominal outlet is required for a 12” nominal diameter Ductile Iron pipe (13.20” OD), the ordering code is:

**6606** - 12” x 6” - 13.40” i.e. **6606 - 12 x 6 - 13.40**  
 product nom. main nom. outlet high end of  
 number size size range

**6606** Tapping Sleeves come in 3 sections for nominal pipe sizes of 18” - 24”.

- 6606** – Stainless Steel fabrication with Lifter bar closure
- 6606BB** – Stainless steel fabrication with bolt bracket closures
- 6606MJ** – Stainless Steel fabrication with Lifter bar closure and MJ flange
- 6606BBMJ** – Stainless steel fabrication with bolt bracket closures and MJ flange
- 6606CSF** – Stainless Steel fabrication with Lifter bar closure and epoxy coated carbon steel flange
- 6606BBCSF** – Stainless Steel fabrication with bolt bracket closure and epoxy coated carbon steel flange

Note: - For sizes not listed above, call ROBAR for availability.  
 - The working range displayed is only a guideline, other ranges are available.



This product is tested and certified by WQA to NSF/ANSI standard 61

### ROBAR INDUSTRIES LTD.

Surrey, British Columbia  
 Phone: 1-800-663-6553

Saint-Bruno, Quebec  
 Phone: 1-800-315-9525

Website: [www.robarindustries.com](http://www.robarindustries.com) / E-mail: [waterworks@robarindustries.com](mailto:waterworks@robarindustries.com)



# 6606 Series

## STAINLESS STEEL TAPPING SLEEVE

### Mechanical Joint Flange

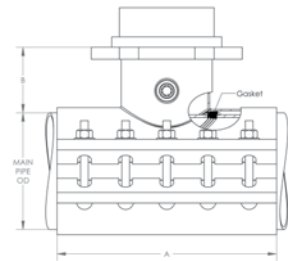
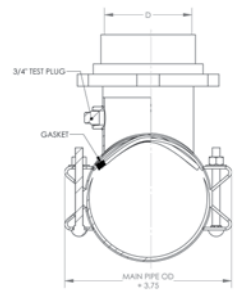
#### MATERIAL SPECIFICATIONS:

- Shell: T-304 Stainless Steel, fully passivated\*.
- Fasteners: 5/8" NC T304 Stainless Steel. Nuts coated with anti-galling compound. Torque is 70-80 ft. lbs.
- Gaskets: Ringseal: NBR (Buna N) Rubber. Liner: SBR (Buna S) Rubber. Full wrap around.
- Test Plug: 3/4" NPT Stainless Steel.
- Flange: T-304 Stainless Steel\*, as per AWWA C-111.  
(Carbon Steel, Epoxy coated Flange available)
- Outlet Pipe: T-304 Stainless Steel, fully passivated\*.



TAPPING SLEEVE DATA				
NOMINAL OUTLET SIZE	A	B	C	BOLT SIZE
4	12	4	4 13/32	5/8
6	16	4 1/2	6 11/32	5/8
8	20	5	8 1/2	5/8
10	20	5 1/2	10 3/8	5/8
12	24	5 3/4	12 1/4	5/8

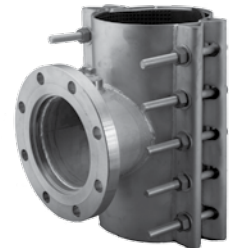
All dimensions are in inches.



### 6606 Bolt Bracket

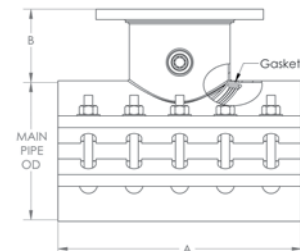
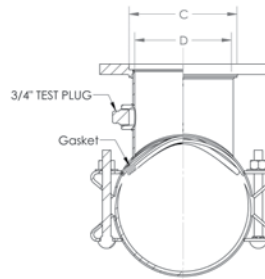
#### MATERIAL SPECIFICATIONS:

- Shell: T-304 Stainless Steel, fully passivated\*.
- Fasteners: 5/8" NC T304 Stainless Steel. Nuts coated with anti-galling compound. Torque is 70-80 ft. lbs.
- Gaskets: Ringseal: NBR (Buna N) Rubber. Liner: SBR (Buna S) Rubber. Full wrap around.
- Test Plug: 3/4" NPT Stainless Steel.
- Flange: T-304 Stainless Steel\*, as per AWWA C-207 Class D. (Carbon Steel, Epoxy coated Flange and MJ available)
- Outlet Pipe: T-304 Stainless Steel, fully passivated\*.



TAPPING SLEEVE DATA					
NOMINAL OUTLET SIZE	A	B	C (DIA.)	D (DIA.)	BOLT SIZE
3	12	4	4 1/32	3 1/2	5/8
4	12	4	5 1/32	4 1/2	5/8
6	16	4 1/2	7 1/32	6 1/2	5/8
8	20	5	9 1/32	8 1/2	5/8
10	20	5 1/2	11 1/32	10 7/16	5/8
12	24	5 3/4	13 1/32	12 7/16	5/8

All dimensions are in inches.



#### ROBAR INDUSTRIES LTD.

Surrey, British Columbia  
Phone: 1-800-663-6553

Saint-Bruno, Quebec  
Phone: 1-800-315-9525

Website: [www.robarindustries.com](http://www.robarindustries.com) / E-mail: [waterworks@robarindustries.com](mailto:waterworks@robarindustries.com)



# 6606 Series

## TAPPING SLEEVE

NOMINAL OUTLET SIZE	BY	OUTLET SIZE	FITTING LENGTH	NUMBER OF BOLTS	APPROXIMATE SHIPPING WEIGHT		LOW	HIGH
					LBS.	KG.		
4	X	3	12	8	33	15.0	4.70 4.95	4.95 5.20
		4*			36	16.4		
6	X	3	12	8	36	16.4	6.40 6.80	6.80 7.20
		4			39	17.7		
		6*	16	10	43	19.6	6.75 6.85	7.00 7.10
8	X	3	12	8	40	18.2	8.40 8.80	8.80 9.20
		4			43	19.6		
		5	16	10	47	21.4	8.95 9.25	9.20 9.50
		8*						
10	X	3	12	8	43	19.6	10.55 10.90 11.30 11.90	10.95 11.30 11.70 12.30
		4			46	20.9		
		6	16	10	50	22.7		
		8			68	30.9		
		10	20	14	73	33.2		
12	24	16			111	50.5		
12	X	3	12	8	46	20.9	12.15 12.55 13.00 13.40 13.80	12.55 12.95 13.40 13.80 14.20
		4			49	22.3		
		6	16	10	53	24.1		
		8			72	32.7		
		10	20	14	77	35.0		
		12			24	16		
14	X	3	12	8	67	30.5	15.10 15.50 15.80 16.20	15.50 15.90 16.20 16.60
		4			70	31.8		
		6	16	10	74	33.6		
		8			93	42.3		
		10	20	14	98	44.6		
		12			24	16		
16	X	3	12	12	71	32.3	17.20 17.40 17.80 18.40 18.80	17.60 17.80 18.20 18.80 19.20
		4			75	34.1		
		6	16	15	79	35.9		
		8			100	45.5		
		10	20	21	105	47.7		
		12			24	24		
18	X	3	12	12	74	33.6	19.30 19.80 20.20	19.70 20.20 20.60
		4			77	35		
		6	16	15	81	36.8		
		8			103	46.8		
		10	20	21	108	49.1		
		12			24	24		
20	X	3	12	12	84	38.2	21.40 22.00 22.60	21.80 22.40 23.00
		4			87	39.6		
		6	16	15	91	41.4		
		8			115	52.3		
		10	20	21	120	54.6		
		12			24	24		
24	X	3	12	12	90	40.9	23.20 23.80 25.60	23.60 24.20 26.00
		4			93	42.3		
		6	16	15	97	44.1		
		8			121	55.0		
		10	20	21	127	57.7		
		12			24	24		

Note: Size on size for IPS is not available.

Note: \* For size on size tapping an undersize cutter is used.

### ROBAR INDUSTRIES LTD.

Surrey, British Columbia  
Phone: 1-800-663-6553

Saint-Bruno, Quebec  
Phone: 1-800-315-9525

Website: [www.robarindustries.com](http://www.robarindustries.com) / E-mail: [waterworks@robarindustries.com](mailto:waterworks@robarindustries.com)