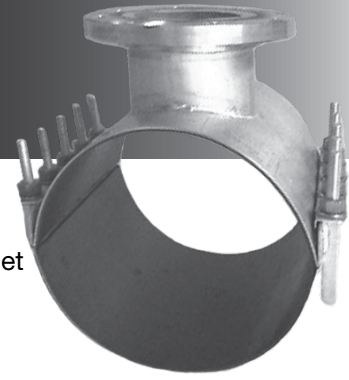




6626 STAINLESS STEEL OUTLET SLEEVE

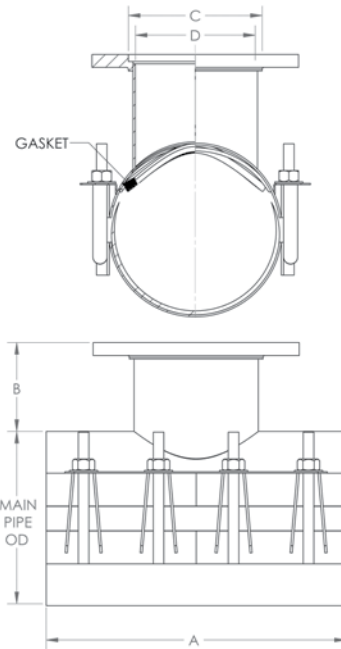


APPLICATIONS:

ROBAR 6626 Outlet Sleeves are used for “DRY TAP” applications. Outlet options are 3” through 12” including size on size for 4” and above. Particularly suited for use on High Density Polyethylene (HDPE).

MATERIAL SPECIFICATIONS:

Shell: T-304 Stainless Steel, fully passivated.**
 Fasteners: 5/8” NC T304 Stainless Steel,
 Rolled threads. Nuts coated with anti-galling compound.
 Torque is 70-80 ft. lbs.
 Gaskets: Ringseal: NBR (Buna N) Rubber.
 Liner: SBR (Buna S) Rubber.
 Flange: T-304 Stainless Steel* as per AWWA C-207 Class D.
 Outlet: T-304 Stainless Steel*.



OUTLET SLEEVE DATA					
NOMINAL OUTLET SIZE	A	B	C (DIA.)	D (DIA.)	BOLT SIZE
3	12	4	3.25	3	5/8
4	12	4	4.25	4	5/8
6	16	4.5	6.25	6	5/8
8	20	5	8.25	8	5/8
10	20	5.5	10.25	10	5/8
12	24	5.75	12.25	12	5/8

All dimensions are in inches.

NOMINAL PIPE SIZE	BY X	OUTLET SIZE	FITTING LENGTH	NUMBER OF BOLTS	APPROXIMATE SHIPPING WEIGHT		WORKING RANGE			
					LBS.	KG.	LOW	HIGH		
4	X	3	12	8	33	15.0	4.70	4.95		
		4*			36	16.4	4.95	5.20		
6	X	3	12	8	36	16.4	6.40	6.80		
		4			39	17.7	6.80	7.20		
		6*	16	10	43	19.6	6.75	7.00	7.00	7.25
							7.25	7.50		
8	X	3	12	8	40	18.2	8.40	8.80		
		4			43	19.6	8.80	9.20		
		6	16	10	47	21.4	9.20	9.60		
		8*					20	14	64	29.1
							9.25	9.50		

All dimensions are in inches.

6626 rated for 150 PSI working pressure (contact Robar for higher pressure ratings).

Note: - Contact ROBAR for tapping into HDPE DR21 and higher.
 **Refers to chemically treating Stainless Steel after welding (“Pickled/Passivated”) to return it to its original appearance.
 * Size on size for IPS OD is not available.
 - For size on size tapping an undersize cutter is used.



This product is tested and certified by WQA to NSF/ANSI standard 61

ROBAR INDUSTRIES LTD.

Surrey, British Columbia
 Phone: 1-800-663-6553

Saint-Bruno, Quebec
 Phone: 1-800-315-9525

Website: www.robarindustries.com / E-mail: waterworks@robarindustries.com



6626

STAINLESS STEEL OUTLET SLEEVE

NOMINAL PIPE SIZE	BY X	OUTLET SIZE	FITTING LENGTH	NUMBER OF BOLTS	APPROXIMATE SHIPPING WEIGHT		WORKING RANGE	
					LBS.	KG.	LOW	HIGH
10	X	3	12	8	43	19.6	10.55	10.95
		4			46	20.9		
		6	16	10	50	22.7		
		8	20	14	68	30.9		
		10*			73	33.2		
12	X	3	12	8	46	20.9	12.15	12.55
		4			49	22.3		
		6	16	10	53	24.1		
		8	20	14	72	32.7		
		10			77	35.0		
		12*	24	16	111	50.5		
14	X	3	12	8	67	30.5	15.10	15.50
		4			70	31.8		
		6	16	10	74	33.6		
		8	20	14	93	42.3		
		10			98	44.6		
		12	24	16	132	60.0		
16	X	3	12	8	71	32.3	17.20	17.60
		4			75	34.1		
		6	16	10	79	35.9		
		8	20	14	100	45.5		
		10			105	47.7		
		12	24	16	141	64.1		
18	X	3	12	12	74	33.6	19.30	19.70
		4			77	35		
		6	16	15	81	36.8		
		8	20	21	103	46.8		
		10			108	49.1		
		12	24	24	144	65.5		
20	X	3	12	12	84	38.2	21.40	21.80
		4			87	39.6		
		6	16	15	91	41.4		
		8	20	21	115	52.3		
		10			120	54.6		
		12	24	24	158	71.8		
24	X	3	12	12	90	40.9	23.20	23.60
		4			93	42.3		
		6	16	15	97	44.1		
		8	20	21	121	55.0		
		10			127	57.7		
		12	24	24	167	75.9		

All dimensions are in inches.

HOW TO ORDER:

Determine the product number (**6626**), nominal main size, nominal outlet size and the high limit number (see table above) and then order by using the appropriate ordering code as shown in the following example. If a Stainless Steel Outlet Sleeve, with a 6" nominal outlet is required for a 12" nominal diameter HDPE pipe (12.75" OD), the ordering code is:

6626 - 12" x 6" - 12.95" i.e. **6626 - 12 x 6 - 12.95**
 product nom. main nom. outlet high end of
 number size size range

6626 Tapping Sleeves come in 3 sections for nominal pipe sizes of 18" - 24".

Note: * - Size on size for IPS OD is not available.

- For sizes not listed above, call ROBAR for availability.
- The working range displayed is only a guideline, other ranges are available.

ROBAR INDUSTRIES LTD.

Surrey, British Columbia
 Phone: 1-800-663-6553

Saint-Bruno, Quebec
 Phone: 1-800-315-9525

Website: www.robarindustries.com / E-mail: waterworks@robarindustries.com