



# 6636AS

## ABANDON SERVICE SLEEVE



### APPLICATIONS:

ROBAR **6636AS** Abandon Service Sleeves are used to seal off abandoned or decommissioned 3/4" through 2" main stops. Allows for no disruption in water service. No re-chlorination of lines due to atmospheric exposure. Simply install over existing main stop. Available in bolt bracket style or lifter bar style.

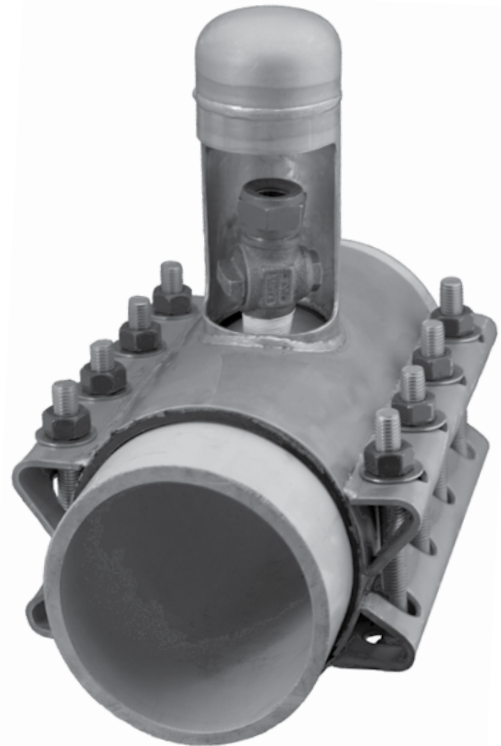
### MATERIAL SPECIFICATIONS:

Shell: T304 Stainless Steel, fully passivated\*.  
 Fasteners: 5/8" NC T304 Stainless Steel. Nuts coated with anti-galling compound. Torque is 70-80 ft. lbs.  
 Gaskets: Ringseal: NBR (Buna N) Rubber.  
 Liner: SBR (Buna S) Rubber.

Outlet Pipe: T304 Stainless Steel, fully passivated\*.  
 Outlet Size: 3" outlet size is used to cap 3/4" & 1" main stops. With a 3" outlet you have the option of having the fitting length 8" or 12".  
 4" outlet size is used to cap 1-1/4" - 2" main stops. With a 4" outlet the standard fitting length is 12".

NOMINAL PIPE SIZE	BY X	OUTLET SIZE	FITTING LENGTH	NUMBER OF BOLTS	WORKING RANGE	
					LOW	HIGH
4	X	3	8 or 12	4 or 8	4.70	4.95
		4	12	8	4.95	5.20
6	X	3	8 or 12	4 or 8	6.40	6.80
		4	12	8	6.80	7.20
8	X	3	8 or 12	4 or 8	8.40	8.80
		4	12	8	8.80	9.20
10	X	3	8 or 12	4 or 8	10.55	10.95
		4	12	8	10.90	11.30
12	X	3	8 or 12	4 or 8	11.30	11.70
		4	12	8	11.90	12.30
14	X	3	8 or 12	4 or 8	12.55	12.95
		4	12	8	13.00	13.40
16	X	3	8 or 12	4 or 8	13.40	13.80
		4	12	8	13.80	14.20
18	X	3	8 or 12	4 or 8	15.10	15.50
		4	12	8	15.50	15.90
20	X	3	8 or 12	4 or 8	15.80	16.20
		4	12	8	16.20	16.60
24	X	3	8 or 12	4 or 8	17.20	17.60
		4	12	8	17.40	17.80
24	X	3	8 or 12	4 or 8	17.80	18.20
		4	12	8	18.40	18.80
24	X	3	8 or 12	4 or 8	19.30	19.70
		4	12	8	19.80	20.20
24	X	3	8 or 12	4 or 8	20.20	20.60
		4	12	8	21.40	21.80
24	X	3	8 or 12	4 or 8	22.00	22.40
		4	12	8	22.60	23.00
24	X	3	8 or 12	4 or 8	23.80	24.20
		4	12	8	25.60	26.00

All dimensions are in inches.



### HOW TO ORDER:

Determine the product number (**6636AS**), the nominal main size, the nominal outlet size and the actual main pipe OD, and then use the appropriate ordering code as shown in the following example.

To fit an Abandon Service Sleeve over 8" C900 pipe (9.05"OD) that has a 3/4" main stop attached, the ordering code would be:

**6636AS** - 8" x 3" - 9.05" i.e. **6636AS - 8 x 3 - 9.05**  
 product nom. main nom. outlet actual main  
 number size size OD

Note: \* Refers to chemically treating Stainless Steel after welding ("Pickled/Passivated") to return it to its original appearance.  
 - The high limit of the range is used in the ordering code.  
 - Other sizes and variations available on request.

### ROBAR INDUSTRIES LTD.

Surrey, British Columbia  
 Phone: 1-800-663-6553

Saint-Bruno, Quebec  
 Phone: 1-800-315-9525

Website: [www.robarindustries.com](http://www.robarindustries.com) / E-mail: [waterworks@robarindustries.com](mailto:waterworks@robarindustries.com)