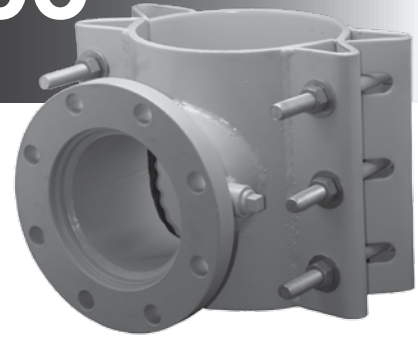




6808 / 6806 / 6906

CARBON STEEL TAPPING SLEEVE



APPLICATIONS:

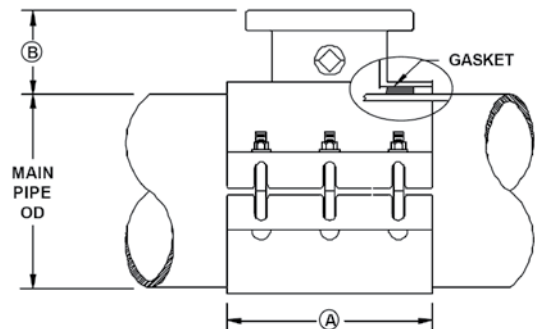
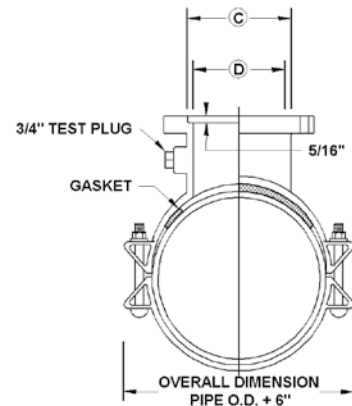
ROBAR 6808 / 6906 / 6906 Tapping Sleeves are used to make a branch outlet off a main supply line on Steel, Ductile Iron, Cast Iron, Asbestos Cement and C900 pipe. Not recommended for Concrete Pressure pipe or HDPE.

MATERIAL SPECIFICATIONS:

Body: Shell: Carbon Steel
 Outlet Pipe: Schedule 40 Carbon Steel or equivalent.
 Flange: Carbon Steel as per AWWA C207 class D. Mechanical Joint flange available.
 Fasteners: **6808/6908** - 3/4" NC HSLA.
6806/6906 - 3/4" NC T-304 Stainless Steel. Nuts coated with anti-galling compound. Torque is 80ft. lbs.
 Gaskets: NBR (BUNA-N) rubber.
 Test Plug: 3/4" NPT Carbon Steel.
 Coatings: **6808/6806** - Enamel coated.
6908/6906 - Corrosion Protective Epoxy coating.

TAPPING SLEEVE DATA

NOMINAL OUTLET SIZE	A	B	C (DIA.)	D (DIA.)	BOLT QTY.	BOLT SIZE
3	12	5.19	4.06	3	6	3/4
4	12	5.19	5.06	4	6	3/4
6	12	5.63	7.06	6	6	3/4
8	16	6.00	9.06	8	8	3/4
10	20	6.50	11.06	10	10	3/4
12	20	6.75	13.06	12	10	3/4



HOW TO ORDER:

Determine the product number (6808, etc.), nominal main size, nominal outlet size and the high limit number (see table above) and then order using the appropriate ordering code as shown in the following example.

If an Enamel coated mild steel tapping sleeve is required to install a 8" outlet on a 12" Ductile Iron pipe (13.20" OD), the ordering code is:

6808 - 12" x 8" - 13.30" i.e. **6808 - 12 x 8 - 13.30**
 product nom. main size nom. outlet size high end

Carbon Steel tapping sleeves rated for 150 PSI working pressure (contact Robar for higher pressure ratings).



This product is tested and certified by WQA to NSF/ANSI standard 61

ROBAR INDUSTRIES LTD.

Surrey, British Columbia
 Phone: 1-800-663-6553

Saint-Bruno, Quebec
 Phone: 1-800-315-9525

Website: www.robarindustries.com / E-mail: waterworks@robarindustries.com



6808 / 6806 / 6906

CARBON STEEL TAPPING SLEEVE

NOMINAL PIPE SIZE	BY X	OUTLET SIZE	FITTING LENGTH	NUMBER OF BOLTS	APPROXIMATE SHIPPING WEIGHT		WORKING RANGE	
					LBS.	KG.	LOW	HIGH
6	X	3	12	6	46	21	6.90	7.20
		4			50	23		
		6**			50	23		
8	X	3	12	6	61	28	8.50	8.90
		4			65	29		
		6			80	36		
		8**	90	41				
10	X	3	12	6	64	29	9.70	10.10
		4			68	31		
		6			70	32		
		8	16	8	92	42		
		10**	20	10	118	54		
12	X	3	12	6	88	40	12.10	12.50
		4			92	42		
		6			100	45		
		8	16	8	115	52		
		10	20	10	130	59		
		12**	20	10	170	77		
14	X	3	12	6	91	41	13.60	14.05
		4			95	43		
		6			102	56		
		8	16	8	124	68		
		10	20	10	150	91		
		12	20	10	200	102		
16	X	3	12	6	101	46	15.75	16.15
		4			105	47		
		6			114	62		
		8	16	8	136	74		
		10	20	10	162	96		
		12	20	10	212	108		
18	X	3	12	6	128	58	17.85	18.30
		4			132	60		
		6			154	70		
		8	16	8	180	82		
		10	20	10	230	105		
		12	20	10	255	116		
20 - 22	X	3	12	6	133	60	19.90	20.40
		4			137	62		
		6			159	72		
		8	16	8	185	84		
		10	20	10	235	107		
		12	20	10	260	118		
24	X	3	12	6	163	74	23.60	24.15
		4			167	76		
		6			189	86		
		8	16	8	215	98		
		10	20	10	265	120		
		12	20	10	290	132		

All dimensions are in inches.

For a 4" tapping sleeve, see **6606**, **6404** or **6506**.

Note: * The high limit of the range is used in the ordering code.

** When ordering size on size Tapping Sleeves, a 1/2" undersize cutter is required. Size on size for IPS size is unavailable.

- Other working ranges are available on request.

ROBAR INDUSTRIES LTD.

Surrey, British Columbia
Phone: 1-800-663-6553

Saint-Bruno, Quebec
Phone: 1-800-315-9525

Website: www.robarindustries.com / E-mail: waterworks@robarindustries.com