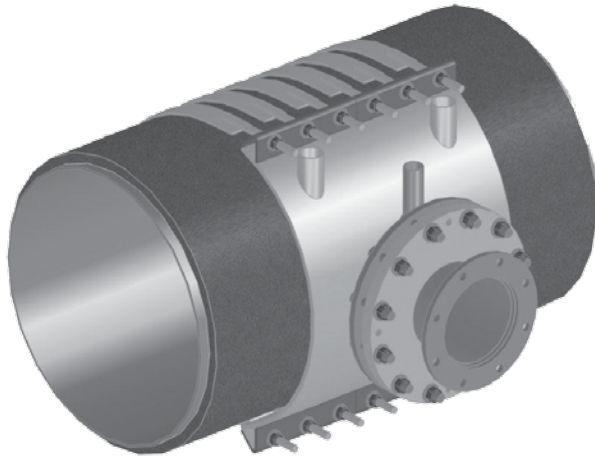




6898 / 6996

CONCRETE CYLINDER PIPE TAPPING SLEEVE



MATERIAL SPECIFICATIONS:

Body:	Carbon Steel plate (ASTM A-36)
Flange:	Drilled and faced per ANSI standards. Other drillings available. AWWA C207.
Gaskets:	NBR (Buna N) Rubber (AWWA C111).
Fasteners:	3/4" NC low alloy (AWWA C111).
Coating:	6898 Two coats of enamel.

OTHER CONFIGURATIONS:

6996: Epoxy coated body, **T316** Stainless Steel fasteners

HOW TO ORDER:

Determine the product number (**6898** or **6996**) and provide the following information:

1. OD of steel cylinder,
2. OD/thickness of concrete,
3. Outlet size,
4. Line pressure,
5. Line contents,
6. Solid back or straps
7. Brand name of tapping valve used, and
8. Any unusual conditions or requirements.

SIZES AVAILABLE:

16" to 120" Nominal Pipe OD on main supply line, 4" to 24" Nominal OD on branch line.

APPLICATIONS:

ROBAR **6898** or **6996** Concrete Cylinder Pipe Tapping Sleeves complement our existing line of Tapping Sleeves. These fabricated sleeves are designed to reinforce the concrete cylinder pipe when the structural wires are cut and have the additional benefit of being able to be very easily installed.

STANDARD FEATURES:

- Capable of working to 150 psi
- Oversized outlet for easy installation
- Broad gasket for sealing over weld areas
- Reinforced outlet seal face
- Installation of load bearing screws for valve support
- Shop coated over white metal cleaning
- 3 central grout holes
- Tapping valve location spigot

ROBAR INDUSTRIES LTD.

Surrey, British Columbia
Phone: 1-800-663-6553

Saint-Bruno, Quebec
Phone: 1-800-315-9525

Website: www.robarindustries.com / E-mail: waterworks@robarindustries.com