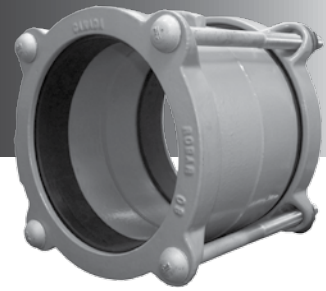




STAB-FIT



APPLICATIONS:

ROBAR **Stab-Fit** couplings can be used to couple dissimilar ODs in the same nominal size group. The **Stab-Fit** coupling comes with a stab-fit design, allowing for use on Ductile Iron, Steel, PVC, HDPE, and Old Cast Iron pipe.

MATERIAL SPECIFICATIONS:

Center Sleeve: Cast Ductile Iron
 End Rings: Cast Ductile Iron.
 Gaskets: SBR.
 Fasteners: **1408SF/1508SF** - 5/8" NC HSLA Steel.
1406SF/1506SF - 5/8" T304 Stainless Steel.
 Nuts coated with anti-galling compound.
 Torque is 70 ft. lbs.
 Coating: **1408SF/1406SF** - 2 coats of Enamel.
1506SF/1508SF - Corrosion Protective Epoxy coating.

HOW TO ORDER:

Determine the product number (**1506SF**, etc.), and order the nominal size you require and then use the appropriate ordering code as shown in the example.

To couple 6" steel pipe (6.63"OD) to a 6" ductile pipe (6.90"), using SS bolts and epoxy coating, the ordering code is:

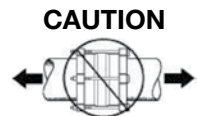
1506SF x 6" i.e. **1506SF x 6**
 product coupling
 number range

NOMINAL SIZE	WORKING RANGE	BARREL LENGTH	NO. OF BOLTS	WEIGHT LBS.
4	4.50 - 5.10	5	4	16
6	6.63 - 7.22	5	4	24
8	8.63 - 9.30	5	5	28
10	10.75 - 11.40	7	7	49
12	12.75 - 13.50	7	8	55

All dimensions are in inches.

Coupling rated for 150 PSI working pressure.

Note: - Available in 7" barrels
 - Stab-Fit design allows for installation without dis-assembly
 - The use of a pipe insert is required when installing coupling on HDPE.



Couplings do not prevent pipe pullout. Suitable restraint should be used when required.

ROBAR INDUSTRIES LTD.

Surrey, British Columbia
Phone: 1-800-663-6553

Saint-Bruno, Quebec
Phone: 1-800-315-9525

Website: www.robarindustries.com / E-mail: waterworks@robarindustries.com