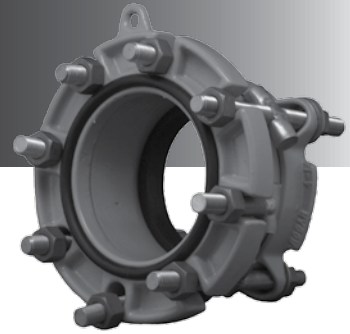




7400 / 7500 INSTALLATION GUIDE



1. Visually inspect the Flange Coupling Adapter to ensure it is of the required outside diameter for the desired application. Make sure the coupling is complete and there are no missing nuts, bolts or washers.
2. Clean the pipe end to ensure that all dirt and irregularities have been removed.
3. Slide the end ring over the pipe end.
4. Lubricate the coupling gaskets and the pipe with potable, NSF certified lube. ROBAR recommends SLIKSTYX. Slide the appropriate gasket over the pipe. The tapered end must face the pipe ends.
5. Slide the center ring over the pipe. Position the flanged end of the center ring against the mating flange. An O-Ring gasket is supplied with the FCA, eliminating the need for a flat flange gasket. Keep the pipe gap to a minimum.
6. Slide the bolts into place and assemble the flanged joint. Slide the gasket and endplate into place against the center ring.

Note: Longer end of crossbolt gets inserted on coupling end plate side.

7. Torque each bolt alternating between bolts in a “star” pattern to the torque levels indicated below:

4” - 8” : 80 ft. lbs.
10” - 12” : 100 ft. lbs.

CAUTION



Couplings do not prevent pipe pullout.
Suitable restraint should be used when required.

ROBAR INDUSTRIES LTD.

Surrey, British Columbia
Phone: 1-800-663-6553

Saint-Bruno, Quebec
Phone: 1-800-315-9525

Website: www.robarindustries.com / E-mail: waterworks@robarindustries.com