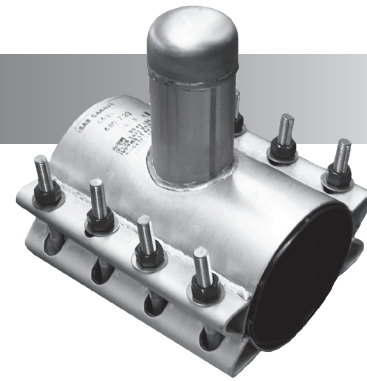




6636AS

ABANDON SERVICE SLEEVE



APPLICATIONS

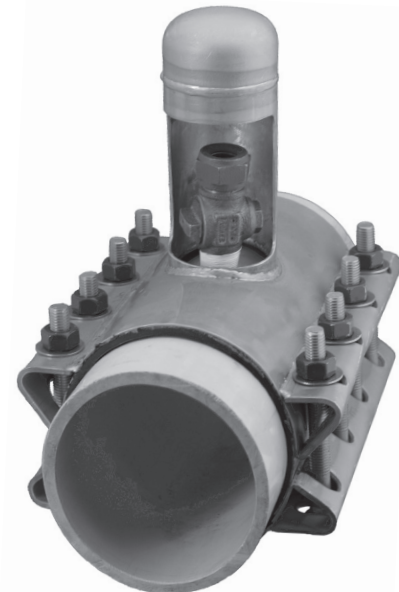
ROBAR 6636AS Abandon Service Sleeves are used to seal off abandoned or decommissioned 3/4" through 2" main stops. Allows for no disruption in water service. No re-chlorination of lines due to atmospheric exposure. Simply install over existing main stop. Available in bolt bracket style or lifter bar style.

MATERIAL SPECIFICATIONS

Shell:	T-304 Stainless Steel, fully passivated*
Fasteners:	5/8" NC T304 Stainless Steel. Nuts coated with anti-galling compound. Torque is 70-80 ft. lbs
Gaskets:	Ringseal: NBR (Buna N) Rubber. Liner: NBR (Nitrile) Rubber.
Outlet Pipe:	T-304 Stainless Steel, fully passivated*
Outlet Size:	3" outlet size is used to cap 3/4" & 1" main stops. With a 3" outlet you have the option of having the fitting length 8" or 12". 4" outlet size is used to cap 1-1/4" - 2" main stops. With a 4" outlet the standard fitting length is 12".
PSI Rating:	150 psi

NOMINAL PIPE SIZE	BY X	OUTLET SIZE	FITTING LENGTH	NUMBER OF BOLTS	WORKING RANGE	
					LOW	HIGH
4	X	3	8 or 12	4 or 8	4.70	4.95
		4	12	8	4.95	5.20
6	X	3	8 or 12	4 or 8	6.40	6.80
		4	12	8	6.80	7.20
8	X	3	8 or 12	4 or 8	7.20	7.60
		4	12	8	8.40	8.80
10	X	3	8 or 12	4 or 8	8.80	9.20
		4	12	8	9.20	9.60
12	X	3	8 or 12	4 or 8	10.55	10.95
		4	12	8	10.90	11.30
14	X	3	8 or 12	4 or 8	11.30	11.70
		4	12	8	11.90	12.30
16	X	3	8 or 12	4 or 8	12.55	12.95
		4	12	8	13.00	13.40
18	X	3	8 or 12	4 or 8	13.40	13.80
		4	12	8	13.80	14.20
20	X	3	8 or 12	4 or 8	15.10	15.50
		4	12	8	15.50	15.90
24	X	3	8 or 12	4 or 8	15.80	16.20
		4	12	8	16.20	16.60
18	X	3	8 or 12	6 or 12	17.20	17.60
		4	12	12	17.40	17.80
20	X	3	8 or 12	6 or 12	17.80	18.20
		4	12	12	18.40	18.80
24	X	3	8 or 12	6 or 12	19.30	19.70
		4	12	12	19.80	20.20
24	X	3	8 or 12	6 or 12	20.20	20.60
		4	12	12	21.40	21.80
24	X	3	8 or 12	6 or 12	22.00	22.40
		4	12	12	22.60	23.00
24	X	3	8 or 12	6 or 12	23.80	24.20
		4	12	12	25.60	26.00

All dimensions are in inches.



Note: * Refers to chemically treating Stainless Steel after welding ("Pickled/Passivated") to return it to its original appearance.
- The high limit of the range is used in the ordering code.
- Other sizes and variations available on request.

HOW TO ORDER

Determine the product number (6636AS), the nominal main size, the nominal outlet size and the actual main pipe OD, and then use the appropriate ordering code as shown in the following example.

To fit an Abandon Service Sleeve over 8" C900 pipe (9.05"OD) that has a 3/4" main stop attached, the ordering code would be:

Product Number		Nominal Main Size		Nominal Outlet Size		Actual Main OD
6636AS	-	8"	x	3"	-	9.05"

i.e. 6636AS - 8 x 3 - 9.05

ROBAR INDUSTRIES LTD.

www.robarindustries.com
waterworks@robarindustries.com

Surrey, British Columbia
Phone: 1-800-663-6553

Saint-Bruno, Quebec
Phone: 1-800-315-9525