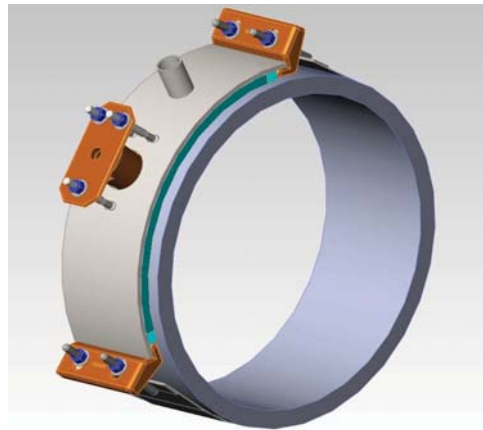




2996 Concrete Pressure Pipe Saddle

PRICE INFORMATION



Sizes Available: 16" - 36" Nominal Pipe
Outlets from 3/4" - 2" in AWWA taper (CC) or Female Iron Pipe (IP)
Fits Concrete Cylinder Pipe

Use:
ROBAR 2996 Concrete Cylinder Service Saddle are used to take a service outlet off a transmission line or distribution line.

Material Specification:

Top Plate: ASTM A36
Outlet: Cast Ductile Iron
Strap: T-304L Stainless Steel, fully passivated
Fasteners: 5/8" NC T-304L Stainless Steel studs, rolled threads, nuts coated
Coating: Corrosion Protective Epoxy per AWWA C213

| Nominal Pipe Size | List Price |
|-------------------|-------------|
| 16" | \$ 728.88 |
| 18" | \$ 773.60 |
| 20" | \$ 818.29 |
| 24" | \$ 864.59 |
| 30" | \$ 895.80 |
| 36" | \$ 1,074.96 |

Larger sizes available upon request

HOW TO ORDER:

Determine the product number (2996), outlet size and outlet thread, then provide the concrete OD and the Cylinder OD as shown in the example.

2996 - 24" x 3/4" CC

ie. - 2996 - 24" x 3/4CC conc OD=29.00", Cylinder OD=27.00"

Note: Outside diameter of the concrete and cylinder are required at time of order.

ROBAR INDUSTRIES LTD.

BC Phone (604) 591-8811 / 1-800-663-6553
Fax (604) 591-5288
Email: waterworks@robarindustries.com

LES PRODUITS INDUSTRIELS ROBAR INC.

QUEBEC Phone (450) 441-7525 / 1-800-315-9525
Fax (450) 441-4894
Web: www.Robarindustries.com