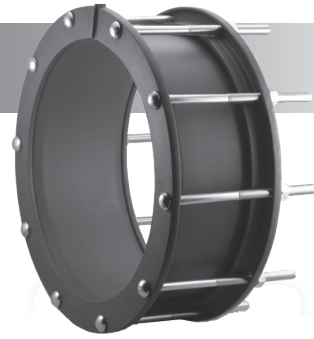




1808 / 1906

FABRICATED STEEL COUPLING



APPLICATIONS

Fabricated **1808 / 1906** Non-Restraining Couplings are used to flexibly couple larger diameter pipe. The **1906** is Epoxy coated with stainless steel fasteners. 4" through 120" available. Can be used to couple concrete pressure pipe together.

MATERIAL SPECIFICATIONS

- Center Sleeve:** Carbon Steel
- End Rings:** Carbon Steel
- Gaskets:** Nitrile (NBR) Rubber
SBR (Buna S) Rubber
- Fasteners:** **1808/1908**—5/8" NC HSLA Steel
1806/1906—5/8" Stainless Steel
Nuts coated with anti-galling compound
Torque is 70–80 ft. lbs
- Coating:** **1808/1806**—Shop Coat
1906/1908—Epoxy Coated

HOW TO ORDER

Determine the product number (**1808**), **actual pipe OD**, Center Sleeve thickness, Center Sleeve length and then use the appropriate ordering code (see chart below), as shown in the following example.

To couple an 18" Steel pipe (18.00" OD) with a 7" long by 1/4" thick Center Sleeve with shop coat and MS bolts, the ordering code is:

Product Number	OD (Actual)	Thickness	Sleeve Length
1808	- 18.00"	- .25"	- 7"
i.e. 1808 - 18.00 - .25 x 7			

Couplings can be manufactured for any diameter. Examples below are Ductile and Steel ODs only. Couplings listed are for common sizes. Please contact ROBAR for sizes not listed below.

NOMINAL PIPE SIZE	OD PIPE	OVERALL OUTSIDE DIAMETER	CENTER SLEEVE T x L	FASTENERS NO. x DIA. x LENGTH	APPROXIMATE SHIPPING WEIGHT	
					LBS.	KG.
4	4.50	8.50	.25 x 5	5/8 x 8	22	10
	4.80	9.17	.25 x 5	5/8 x 8	22	10
6	6.63	11.00	.25 x 7	5/8 x 11	26	12
	6.90	11.27	.25 x 7	5/8 x 11	26	12
8	8.63	12.313	.25 x 7	5/8 x 11	33	15
	9.05	12.563	.25 x 7	5/8 x 11	33	15
10	10.75	14.438	.25 x 7	5/8 x 11	40	18
	11.10	14.625	.25 x 7	5/8 x 11	40	18
12	12.75	17.125	.25 x 7	5/8 x 11	60	27
	13.20	17.563	.25 x 7	5/8 x 11	66	30
14	14.00	18.375	.25 x 7	5/8 x 11	80	36
	15.30	19.688	.38 x 7	5/8 x 11	90	41
16	16.00	20.125	.25 x 7	10 - 5/8 x 11	74	33.6
	17.40	21.75	.38 x 7	10 - 5/8 x 11	87	39.6
18	18.00	22.125	.25 x 7	10 - 5/8 x 11	81	36.8
	19.50	23.875	.38 x 7	12 - 5/8 x 11	96	43.6
20	20.00	24.125	.25 x 7	12 - 5/8 x 11	90	40.9
	21.60	26.00	.38 x 7	12 - 5/8 x 11	107	48.6
24	24.00	28.125	.25 x 7	14 - 5/8 x 11	107	48.6
	25.80	30.188	.38 x 7	14 - 5/8 x 11	127	57.7
30	30.00	34.125	.25 x 7	16 - 5/8 x 11	130	58.9
	32.00	36.375	.38 x 7	16 - 5/8 x 11	156	71.2
36	36.00	40.125	.25 x 7	18 - 5/8 x 11	155	70.30
	38.30	42.688	.38 x 7	18 - 5/8 x 11	185	83.9

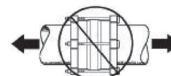
All dimensions are in inches. Larger sizes available

- Note:
- Any barrel length requirement can be accommodated. Please contact ROBAR to specify longer barrels.
 - Couplings are fabricated to exact ODs supplied at time of order.
 - Contact ROBAR for working pressures.



These products are tested and certified by WQA to NSF/ANSI standard 61

CAUTION



Couplings do not prevent pipe pullout. Suitable restraint should be used when required.

ROBAR INDUSTRIES LTD.

www.robarindustries.com
waterworks@robarindustries.com

Surrey, British Columbia
Phone: 1-800-663-6553

Saint-Bruno, Quebec
Phone: 1-800-315-9525